



## OPPORTUNITY DESCRIPTION

The Old Port of Montreal Corporation Inc. (SVPM) is seeking a commercial tenant to operate a landmark space located at the Clock Tower Quay, with the aim of complementing the area’s existing attractions and neighbouring businesses.

### USAGE

SVPM offers the opportunity for various applicants to submit a development project that could include an attraction, a restaurant, or any project relevant to the current facilities at the Clock Tower point. The project must remain accessible to the public. Nightclubs, private events, or “beach club” operations will not be permitted.

### AVAILABILITY

The space for rent is available immediately and can be operated from May to October.

### SPACE FOR RENT

The Clock Tower point occupies a flexible area, with the entire lot used for recreational tourism activities, dining, and light programming.

**Usable lot area:** Approximately 56,000 sq. ft. (see available plans).

### Building dimensions:


Three 20-foot containers linked together form a food concession, and three other 20-foot containers create a technical pavilion housing storage and restrooms. One 40-foot container and one 20-foot container serve as storage.

**Available utilities:** Electricity, water, and sanitary drainage. The site can be renovated or redesigned according to the proposed project, at the proponent’s expense.

### ACCESS

Located at the Clock Tower Quay, Old Port of Montreal.

 **Champ de Mars Metro station** at 15 minutes by walk.

 **Parking** Clock tower Quai.

## SUBMIT A PROJECT

SVPM will make a **comprehensive decision** based on:

- The quality of the proposal; specifically, an example of the activity program and the target clientele;
- The relevance of the concept in harmony with the existing offerings on the Site;
- The contribution to the Clock Tower Quay sector through its foot traffic and vibrancy;
- The ability to propose a project that will be open at least 7 days a week from June 24 to Labor Day, and accessible to the general public;
- The total rent (monthly and percentage-based) proposed, at least for the months of June through September inclusive.

### Please include:

- A presentation of the organization;
- A presentation of the products and services offered, including prices;
- A business plan or investment plan;
- A visual or sketch of the facilities and layouts;
- The required technical services.

Please submit your project before **February 16, 2026** via our website:

<https://www.oldportofmontreal.com/commercial-projects>

If you have any questions, you can write to us at [info\\_commerces@vieuxportdemontreal.com](mailto:info_commerces@vieuxportdemontreal.com)

\*Project selection will be entirely at the discretion of SVPM.

[www.vieuxportdemontreal.com](http://www.vieuxportdemontreal.com)

## GENERAL INFORMATIONS

Located between Old Montreal and the Saint Lawrence River along a 2.5-kilometer stretch, the Old Port of Montreal is a *recreational and tourist destination* as well as a must-visit gathering place for *Montrealers and visitors*.

The Old Port of Montreal welcomes an average of *6.3 million visitors annually*, including 4.5 million during the summer season.

### MAJORS ATTRACTIONS

The site hosts renowned attractions:

- La Grande Roue de Montréal ;
- Zipline and MTL Bungee ;
- Montreal Sciences center;
- Bota Bota spa-sur-l'eau ;
- Expériences Infinity.

### EVENTS

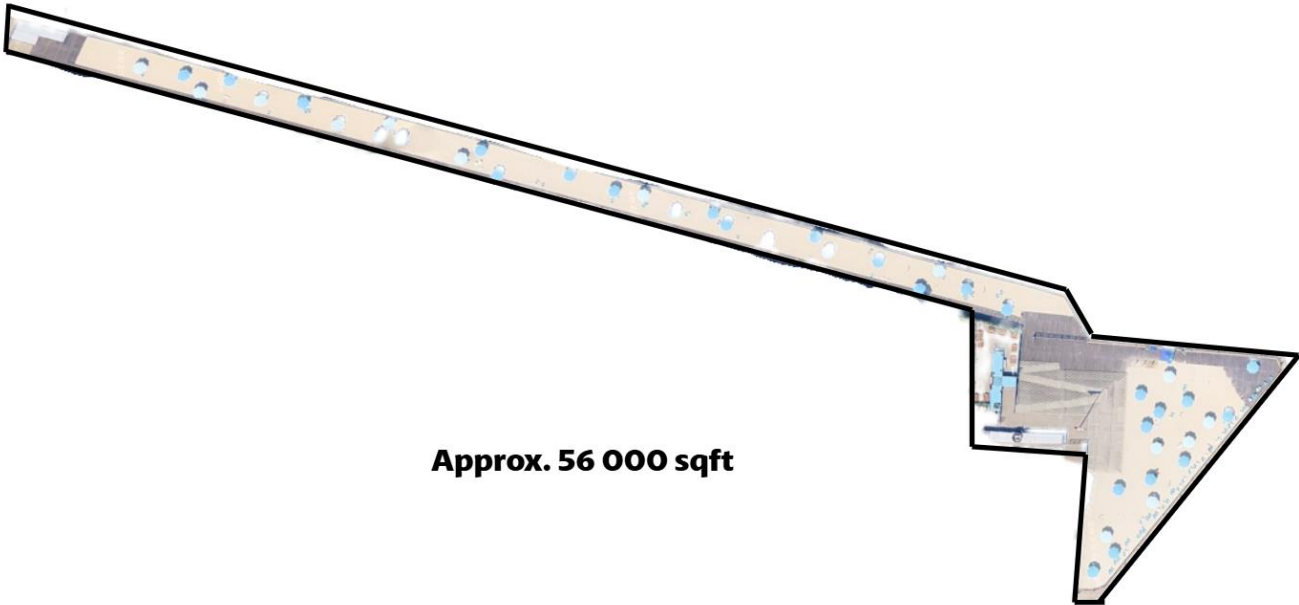
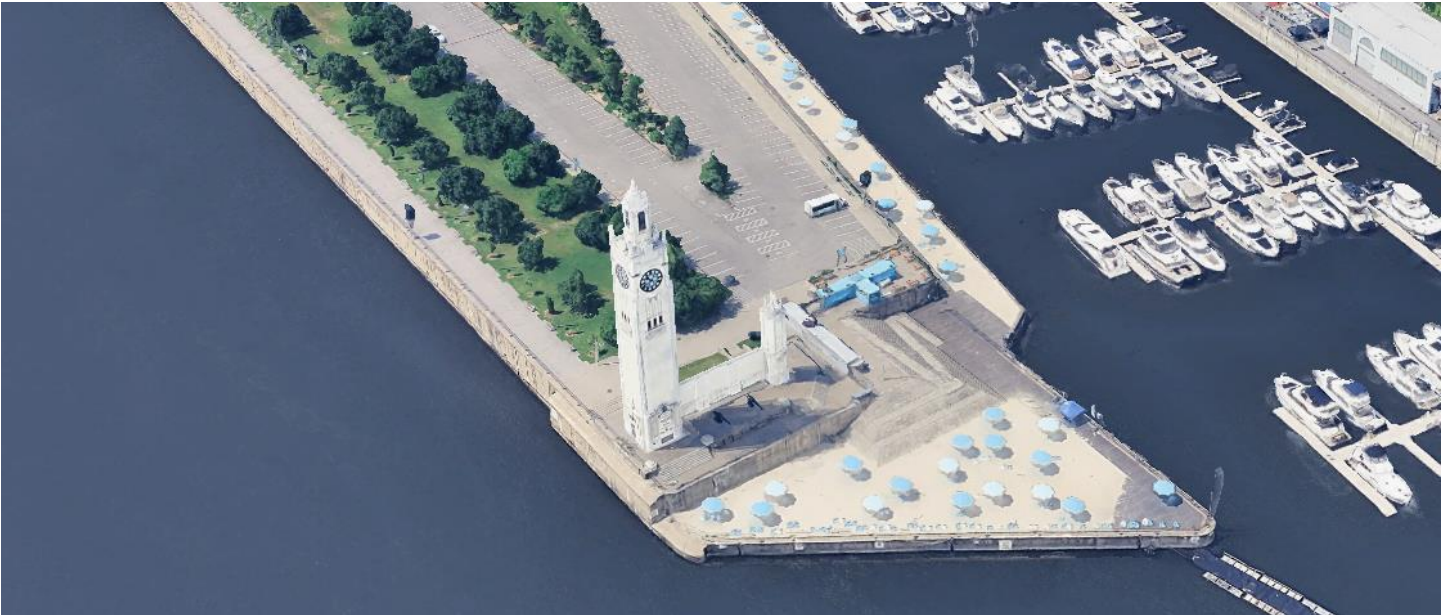
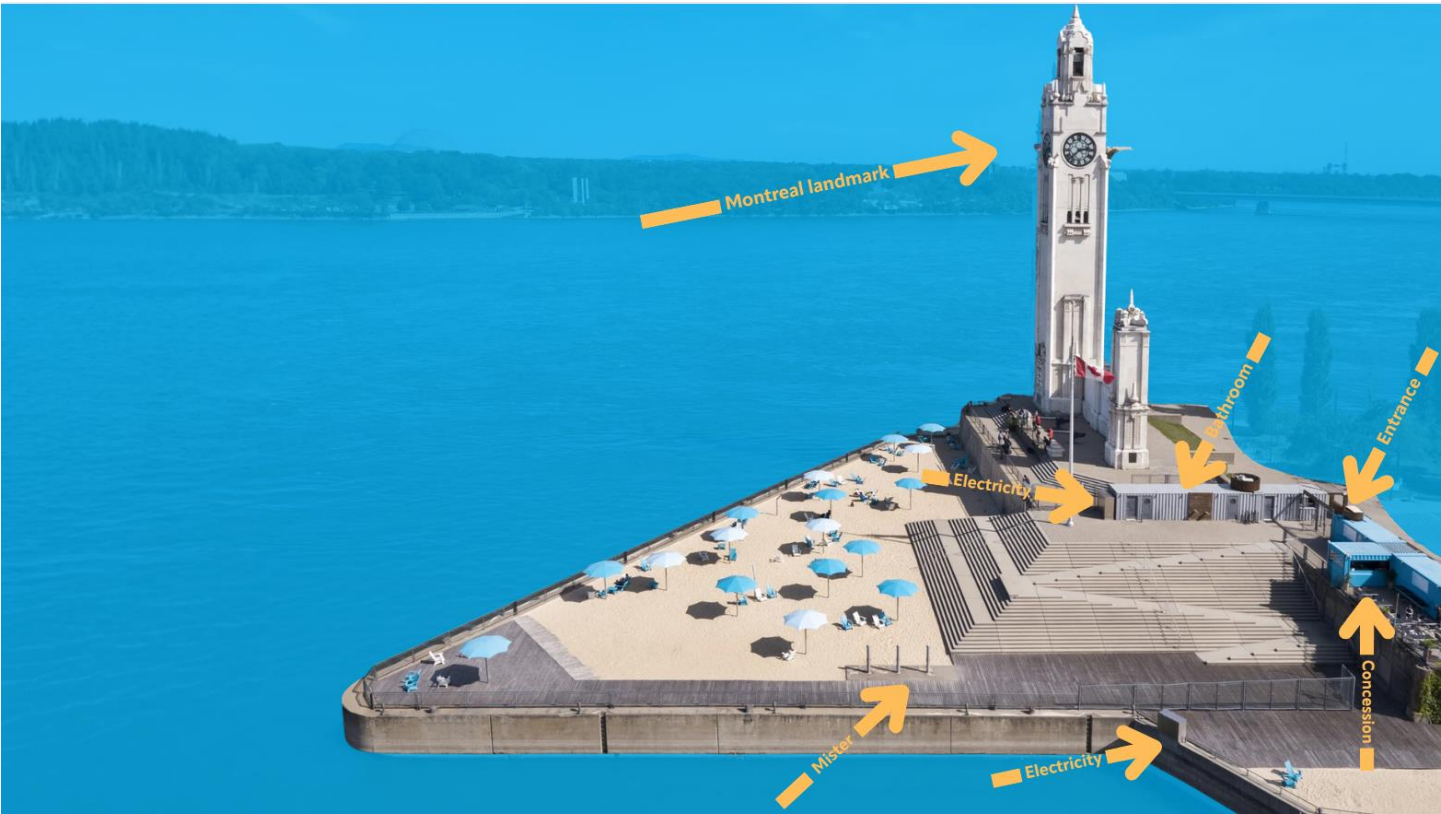
The site offers a *diverse program* and hosts a wide range of cultural, culinary, sports, and musical events, as well as outdoor festivals, some of which are internationally renowned, such as *Cirque du Soleil*, *Igloofest*, and *Jackalope* presented at the Jacques-Cartier Quay.

### NEARBY BUSINESSES

At the Clock Tower Quay, you'll find the *Montreal Yacht Club*, *Saute-Mouton*, and *SOS Labyrinthe*. Nearby, you'll also find *La Grande Roue de Montréal* and *MTL Zipline*. The event platform located close by hosts numerous events annually.

### IMPORTANTS DETAILS

All activities must end at 9 pm at the latest, except for the fireworks evening. Others technical information and pictures are available in [this presentation](#).



**Approx. 56 000 sqft**